

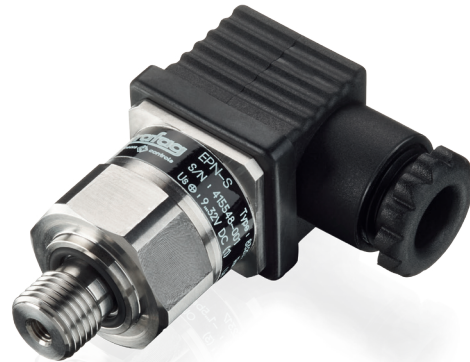
ELECTRONIC PRESSURE SWITCH

Swiss based Trafag is a leading international supplier of high quality sensors and monitoring instruments for measurement of pressure and temperature. The Electronic Pressure Switch EPN-S is based on the well-proven EPN transmitter family. It stands for reliable accuracy over a wide temperature range and excellent long-term stability even in harshest environments in the shipbuilding and railway industry. The switchpoint is factory set or can be programmed on site using Trafag's Sensor Communicator SC.



Applications

- Shipbuilding
- Engine manufacturing
- Railways
- Machine tools
- Hydraulics
- HVAC



Features

- Rugged design for harsh environments
- Wide temperature range
- Excellent long-term stability
- Very compact design
- Switchpoint factory set or programmable on site with Trafag Sensor Communicator SC

Technical Data

Measuring principle	Thin film on steel	Media temperature	-40°C ... +125°C
Measuring range	0 ... 2.5 to 0 ... 600 bar 0 ... 30 to 0 ... 7500 psi	Ambient temperature	Standard: -25°C ... +85°C Option accessory 67: -40°C ... +125°C
Output signal	Transistor (open source)	Approval / conformity	GL
Accuracy @ 25°C typ.	± 0.5 % FS typ. (Switchpoint)		

10/2016

Data sheet H72333g

Subject to change

Ordering information/type code

Measuring range ¹⁾	Pressure measurement range [bar]	Over pressure [bar]	Burst pressure [bar]		Pressure measurement range [psi]	Over pressure [psi]	Burst pressure [psi]		8320 . XX	XX	XX	XX	XX	XX
		0 ... 2.5	5	100	75	0 ... 30	30	720	G5					
	0 ... 4	8	100	76	0 ... 50	115	860	G6						
	0 ... 6	12	100	77	0 ... 100	170	1450	G7						
	0 ... 10	20	200	78	0 ... 150	290	2900	G8						
	0 ... 16	32	200	79	0 ... 250	464	2900	G9						
	0 ... 25	50	300	80	0 ... 400	725	4350	H0						
	0 ... 40	80	300	81	0 ... 500	1160	4350	H1						
	0 ... 60	120	500	82	0 ... 1000	1740	5800	H2						
	0 ... 100	200	500	83	0 ... 1500	2900	7250	H3						
	0 ... 160	320	1000	85	0 ... 2000	4640	10850	H5						
	0 ... 250	500	1000	74	0 ... 3000	7250	14500	G4						
	0 ... 400	800	1500	84	0 ... 5000	11600	21750	H4						
	0 ... 600	1000	2000	86	0 ... 7500	14500	29000	H6						
Sensor	Relative pressure													23
Pressure connection	G1/4" male (O-Ring)													17
	1/4"NPT male													30
	G1/2" male (DIN3852-A) ²⁾													21
	M14x1.5 male (DIN3852-A) ²⁾													22
	1/2"NPT male ²⁾													51
Electrical connection	Male electrical plug: EN 175301-803-A (DIN43650-A)													04
	Cable with shield: Material: FDR 25 (Raychem) 4 x 0.5mm ² , -40°C ... +125°C, (Cable length see "Accessories")													78
	Cable with shield: Material: Radox Tenuis-TW 600V MM S (EN45545), 4 x 0.5mm ² , -40°C ... +120°C, (Cable length see "Accessories")													88
Output signal	1 Transistor out: switchpoint "ON": ... (bar); switchpoint "OFF": ... (bar); delay time: standard 5 (ms), ... (ms) range: 5...10000 (ms)													T1
Accessories	Pressure peak damping element ø 0.4 mm													44
	Pressure peak damping element ø 1.0 mm													40
	Female electrical connector EN 175301-803-A (DIN43650-A)/NBR, -40...90°C													58
	🚂 Railways version (500 VAC/DC), with shielded cable only													11
	Higher operating temperature: -40°C ... +125°C													67
	Cable length 1.5 m													1M
	Cable length 3.0 m													3M
	Cable length 5.0 m													5M

¹⁾ Customized pressure ranges upon request

²⁾ Please ask us



Programming device Sensor Communicator SC



Ordering No.

- Sensor Communicator SC: F88030
- Programming cable with connector EN 175301-803A: F88049

Manual see

- Sensor Communicator SC: www.trafag.com/H73699 (EN) and www.trafag.com/H73698 (DE)

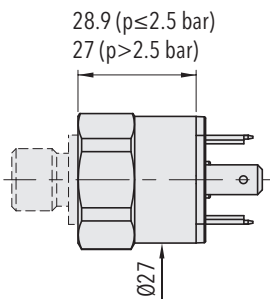


Specifications		
Accuracy	Accuracy @ 25°C typ.	± 0.5 % FS typ. (Switchpoint)
	Temperature dependence switching point	Switchpoint @ +25°C: ± 0.5 % FS typ. Switchpoint @ -25°C ... +85°C: ± 1.0 % FS typ. Switchpoint @ -40°C ... +125°C: ± 1.3 % FS typ. (Accessory 67: higher operating temperature -40°C ... +125°C)
	Long term stability 1 year typ.	≤ ± 0.15 % FS typ.
Electrical Data	Supply voltage	24 (9 ... 32) VDC
	Resistance of insulation	> 10 MΩ, 250 VDC  > 10 MΩ, 500 VDC
	Dielectric strength	250 VAC, 50 Hz  500 VAC, 50 Hz
	Output / supply voltage	Transistor (open source): 24 (9 ... 32) VDC
	Inverse-polarity protection, short-circuit strength @ 25°C during 5 min.	integrated
	Current consumption	≤ 15 mA
	Environmental conditions	Media temperature
Ambient temperature		Standard: -25°C ... +85°C Option accessory 67: -40°C ... +125°C
Protection		Electrical connection 04: IP65 (IP67) Electrical connection 78/88: IP69K
Humidity		Max. 95 % relative
Vibration		15 g (50...2000 Hz)
Shock		50 g / 11 ms
EMC Protection		Emission
	Immunity	EN/IEC 61000-6-2
Mechanical Data	Sensor (wetted parts)	1.4542 (AISI630)
	Pressure connection (wetted parts)	Pressure ranges ≤ 250 bar: 1.4542 (AISI630) Pressure ranges > 250 bar: 1.4301 (AISI304)
	Housing	1.4301 (AISI304)
	Sealing	FKM 70 Sh
	Male electrical plug	See ordering information
	Weight	~ 85 ... 110 g
	Mounting torque	25 Nm

Switching output

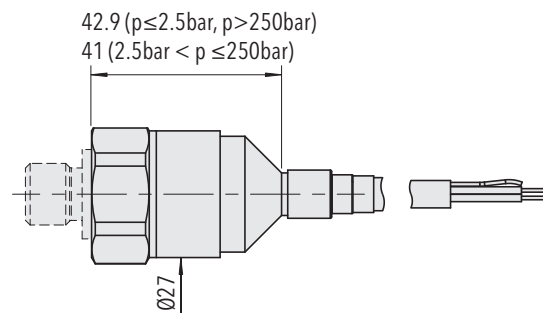
Output signal	1 transistor (open source)
Switchpoint setting	Switchpoint factory set or programmable on site with Trafag Sensor Communicator SC
Adjustment range	0 ... 100 % FS
Switching hysteresis	$\geq 1\%$ FS
Switching current	$\leq 0.5\text{ A}$ @ $-40^\circ\text{C} \dots +85^\circ\text{C}$ $\leq 0.4\text{ A}$ @ $+85^\circ\text{C} \dots +125^\circ\text{C}$ (only with accessory 67: higher operating temperature $-40^\circ\text{C} \dots +125^\circ\text{C}$)
Switching resistance	$\leq 3\Omega$
Delay time	Standard adjustment: 5 ms Adjustable with Trafag Sensor Communicator (only electrical connection 04): 5 ms ... 10 s

Dimensions



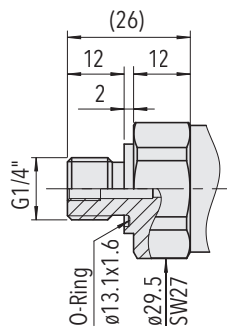
8320.XX.XXXX.04.XX.XX

Switchpoint factory set or programmable on site with Trafag Sensor Communicator SC

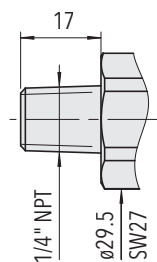


8320.XX.XXXX.78.XX.XX Switchpoint factory set

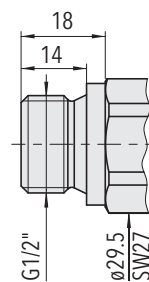
8320.XX.XXXX.88.XX.XX



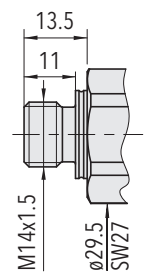
8320.XX.XX17.XX.XX.XX



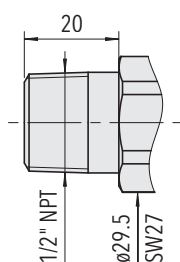
8320.XX.XX 30.XX.XX.XX



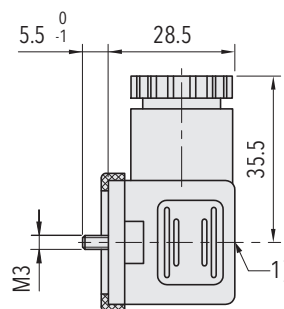
8320.XX.XX 21.XX.XX.XX



8320.XX.XX 22.XX.XX.XX



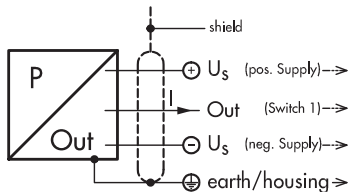
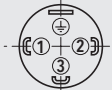
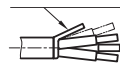
8320.XX.XX51.XX.XX.XX



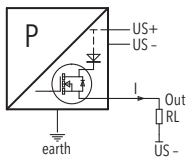
1) Tightening torque 50...60Ncm

8320.XX.XXXX.XX.XX.58

Electrical Connection

		Protection / electrical connection	
		IP65 (IP67)	IP69K
Output signal	 <p>8320.XX.XXXX.XX.T1</p>	Industrial standard EN175301-803A 04 	Cable **) 78/88 Shield 
		1 2 3 ⊕	brown blue black yellow / green

***) Ventilation via cable end



Connection of loads to switch contacts

Additional information

Documents

Data sheet	www.trafag.com/H72333
Instructions	www.trafag.com/H73333
Flyer	www.trafag.com/H70652