

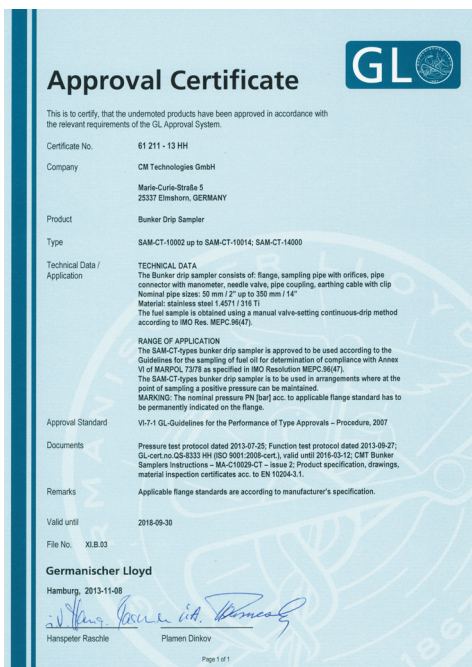
5. Sampling Solutions

One of the most important aspects of any oil analysis program is the sampling method and the sampling equipment used. The sample needs to be representative for the total amount and uncontaminated. Oil samples are required for regulatory analysis but also for commercial and regulatory purposes.

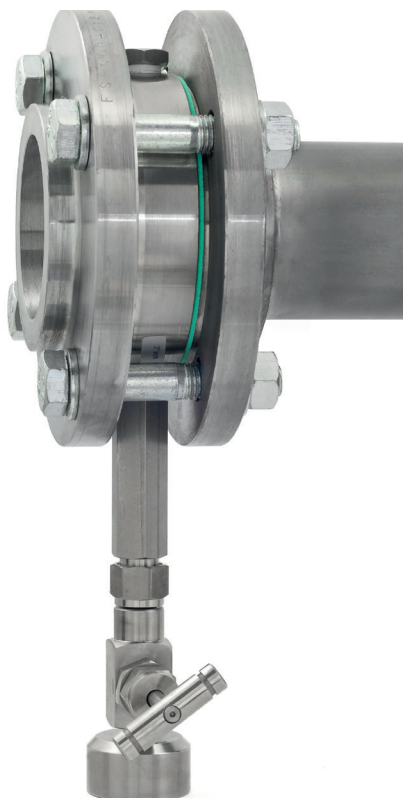
A representative oil sample will provide an accurate representation of the contaminants, additives, oxidation, particulates and wear condition. If a sample does not represent the real condition of the oil and component at the time of sampling, the reliability of both the test result and its interpretation is in doubt.

Representative fuel oil samples are required for both regulatory and commercial purposes. Crucial aspects of the sampling process include taking the sample, the sampling location and witnessing the process.

CMT's sampling solutions provide you with everything you need to easily gather an uncontaminated, representative sample of your running liquids.



Drip Type Bunker Sampler Flange



Using a so called drip sampler is the most common and economic way to obtain a representative sample according MARPOL 73/78 Annex VI.

Our bunker samplers are:

- manufactured under strict ISO 9001 quality assurance standards.
- compliant with IMO MARPOL 73/78 Annex VI helping you to stay within the legal requirements for bunker fuel sampling.
- weight optimized.
- simple to install on all common flanges between 2" and 14".
- one size sampler can be used on most common different standard flanges even for different pressure.

In cases when you have a negative pressure at the point of sampling please use our automatic samplers.

Selecting the Correct Size of Drip Type Bunker Sampler

Select the nearest size Bunker Sampler with an **outer diameter** smaller than the flanges Pitch Circle Diameter minus the flanges Bolt Hole Diameter.

The **inner diameter** must be larger than the Nominal Pipe Size of the flange.

Material:

Stainless Steel 1.4571 / 316Ti
Nominal Flange Thickness: 25/26 mm
Total Thickness
(Including gaskets): 31/32 mm

Ordering Information Flange (other sizes are available on request) - Material: Stainless Steel 1.4571 / 316T

Part Number	Nominal Pipe Size	Inner Diameter	Outer Diameter	Weight	Flange Standard Correlations
SAM-CT-10002	50 mm/2"	63 mm	95 mm	3.5 kg	JISB2210 5K, 10K, 16K, BS 4504 PN10, PN16, BS10 D, E, F, ANSI B16.5 150, 300
SAM-CT-10003	75 mm/3"	86 mm	127 mm	4.0 kg	JISB2210 5K, 10K, 16K, BS 4504 PN16, BS10 D, E, F, ANSI B16.5 150,300
SAM-CT-10004	100 mm/4"	116 mm	157 mm	4.3 kg	BS 4504 PN16, BS10 D, E, F ANSI B16.5 150, 300
SAM-CT-10005	125 mm/5"	144 mm	188 mm	5.0 kg	JISB2210 5K, 10K, 16K, BS 4504 PN16, BS10 D, E, ANSI B16.5 150
SAM-CT-10006	150 mm/6"	171 mm	216 mm	5.5 kg	JISB2210 5K, 10K, 16K, BS 4504 PN10, PN16, BS10 D, E, F, ANSI B16.5 150, 300
SAM-CT-10007	175 mm/7"	194 mm	241 mm	6.2 kg	JISB2210 5K, 10K
SAM-CT-10008	200 mm/8"	221 mm	266 mm	6.5 kg	JISB2210 5K, 10K, 16K, BS 4504 PN10, PN16, BS10 D, E, F, ANSI B16.5 150
SAM-CT-10009	225mm/9"	260 mm	307 mm	6.7 kg	ANSI B16.5 300
SAM-CT-10010	250mm/10"	281 mm	328 mm	7.1 kg	JISB2210 10K, 16K, BS 4504 PN10, PN16, BS10 D, E, F, ANSI B16.5 150, 300
SAM-CT-10011	275mm/11"	319 mm	361 mm	7.2 kg	JISB2210 10K, BS 4504 PN10, PN16, BS10 d, E
SAM-CT-10012	300mm/12"	340 mm	401 mm	7.5 kg	JISB2210 16K, BS10 F, ANSI B16.5 150, 300, BS 4504 PN10, PN16, BS10 D, E, F
SAM-CT-10014	350mm/14"	375 mm	420 mm	8.0 kg	ANSI B16.5 150,300

Fuel Sampler

Normally samplers are installed at the ships manifold between the manifold flange and the flange from the bunker hose.

However, sometimes it is more practical to install the sampling device permanently at a different place.

The CMT Fuel Sampler is designed to be installed direct into an existing fuel pipe anywhere in the supply line.

It can easily be removed for cleaning. After initial installation the fuel line can be used with or without the sampler being inserted.

Benefits:

- Designed specifically for fuel oils
- Easy retrofit
- Service pipes from 2 inch up to 14 inch
- Compliant with ISO 3170

Ordering Information

SAM-CT-14000

Fuel Sampler

Size: 2" - 14"
50 - 350 mm

Weight: 2.0 kg

